



Sailing Instructions

Scottish Fin and Foil Open Championships



SCOTTISH
FIN & FOIL

PRO: Zed Spencer-Milnes

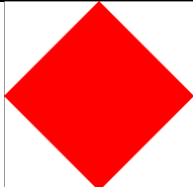
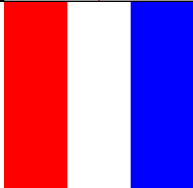
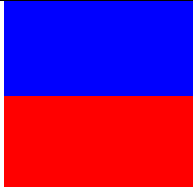

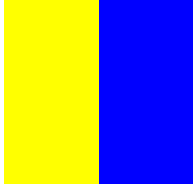
7th – 11th August 2024

Stranraer Watersports Association

Quick Reference

This page "Quick Reference" is not a rule, does not form part of the Sailing Instructions, and is intended solely as an aid to competitors. Competitors should fully read the Sailing Instructions and Notice of Race. Any discrepancy on this page will not be ground for redress. This page can be updated without a notice for competitors.

- **Noticeboard Link:**
<https://www.scottishfinandfoil.org/noticeboard>
- **Wednesday:**
 - Brief @ 10:25
 - First Race @ 11:25
- **Other days**
 - Brief @ 09:15
 - First Race @ 10:25
- ~5 Races each day
- Target time is 15 minute for foils, 25 minutes for non-foils
- **TAKE CARE of other water users** immediately off the launch area
- All starts are 3, 2, 1 GO sequences
- Discards depend on races completed:
 - <3 - None
 - 3-6 – 1 Discard
 - 7-10 – 2 Discards
 - 11 – 3 Discards
- Course code will be shown on the committee prior to the start, extra courses may be added through the week
- **Don't forget to TALLY**

Class	Flag
iQFoil	
Techno	
Raceboard	
Open	
WingFoil Open WingFoil X-15	

Sailing Instructions

The Organising Authority is the Scottish Fin & Foil Association (**SFFA**)

The Host Venue is the Stranraer Water Sports Association (**SWSA**)

The notation '[SP]' in a rule of the sailing instructions (SIs) means that a standard penalty for a breach of the rule may be applied by the Race Committee without a hearing. This changes RRS 63.1 and A5.

The notation '[NP]' in a rule of the sailing instructions (SIs) means that a boat may not protest another boat for breaking that rule. This changes RRS 60.1(a).

1. Rules

- 1.1 The event is governed by the rules as defined in The Racing Rules of Sailing.

2. Changes to Sailing Instructions

- 2.1 Any change to the sailing instructions will be posted at least 30 minutes before the warning signal of the race or races affected, except that any change to the schedule of races will be posted by 2000 on the day before it will take effect.
- 2.2 Changes to a sailing instruction may be made on the water by an Official Vessel displaying flag L and Official Vessels informing competitors orally.

3. Communications with Competitors

- 3.1 Notices to competitors will be posted on the official notice board located at <https://www.scottishfinandfoil.org/noticeboard>
- 3.2 The race office is located at The Stranraer Coastal Rowing Club, Agnew Cres, Stranraer DG9 7JZ
- 3.3 [NP] [DP] While racing, except in an emergency, a boat shall not make voice or data transmissions and shall not receive voice or data communication that is not available to all boats.

4. Code of Conduct

- 4.1 [NP] [DP] Competitors and support persons shall comply with reasonable requests from race officials.
- 4.2 [NP] [DP] [SP] Competitors and support persons shall handle any equipment or place advertising provided by the organising authority with care, seamanship, in accordance with any instructions for its use and without interfering with its functionality.

5. Signals made Ashore

- 5.1 Signals made ashore will be displayed outside the race office on the dedicated flag pole.
- 5.2 When flag AP is displayed ashore, '1 minute' is replaced with 'not less than 10 minutes' in Race Signals AP
- 5.3 [SP] The Class Flag with one sound means 'Boats shall not leave the shore until this signal is made. The warning signal will not be made before the scheduled time or less than 20 minutes after the Class Flag is displayed.'
- 5.4 [NP] [SP] Numeral 3 means 'Every competitor shall wear a wetsuit or drysuit while afloat. A wetsuit is defined as a neoprene garment covering at least the shoulder, torso, and legs.'

6. Schedule of Races

- 6.1 The normal programme for each fleet will be 5 races per day.

- 6.2 One extra race per day may be sailed, provided that no class becomes more than one race ahead of schedule and the change is made according to SI 2.1.
- 6.3 The scheduled time of the warning signal for the first race is 1125 on the Wednesday and Friday
- 6.4 The scheduled time of the warning signal for the first race is 1055 on Thursday, Saturday and Sunday.
- 6.5 To alert boats that a race or sequence of races will begin soon, the orange starting flag will be displayed with one sound at least five minutes before a warning signal is made.
- 6.6 On the last scheduled day of racing no warning signal will be made after 1500.

7. Class Flags

- 7.1 The Class Flags are:

Class	Flag
iQFoil	Signal F
Techno	Signal T
Raceboard	Signal E
Open	Signal O
WingFoil Open WingFoil X-15	Signal K

8. Racing Area

- 8.1 SI Addendum A shows the location of the racing areas.

9. Courses

- 9.1 Courses to sail will include traditional and experimental courses.
- 9.2 The diagrams in the Course Pack show the courses, including the approximate angles between legs, the order in which marks are to be passed, and the side on which each mark is to be left.
- 9.3 Where a gate is shown in the course diagram, it may be replaced by a single mark to be left to port. This will not change the course designation.
- 9.4 Additional courses may be briefed to competitors during the daily briefings. The course diagram and designation will also be provided through a Notice to Competitors on the noticeboard.
- 9.5 No later than the preparatory signal, course signals will be displayed on a board on the start line committee vessel.

10. Marks

- 10.1 Course Marks will be large yellow inflatable buoys
- 10.2 The starting marks will be a race committee vessel (including any buoy, object or boat attached to it) and an orange pin buoy
- 10.3 The finishing marks will be between a race committee vessel (including any buoy, object or boat attached to it) and an orange pin buoy

11. Obstructions

- 11.1 The area of water immediately off the launching shore is shared with the operations of the SWSA and sailors must take care of other water users whilst transiting through.

12. The Start

- 12.1 Races shall be started using the following signals. Times shall be taken from the visual signals; the absence of a sound signal shall be disregarded. This changes RRS B 26.

Minutes before starting signal	Visual signal	Sound signal	Means
3	Class flag	One	Warning signal
2	P, I, U, or black flag	One	Preparatory signal
1	Preparatory flag removed	One long	One minute
0	Class flag removed	One	Starting signal

- 12.2 The starting line is between a staff displaying an orange flag on the signal vessel at the starboard end and the course side of the port-end starting mark.
- 12.3 [DP] [NP] Boats whose warning signal has not been made shall avoid the starting area during the starting sequence for other races.
- 12.4 A boat that does not start within 3 minutes after her starting signal will be scored Did Not Start without a hearing. This changes RRS A5.1 and A5.2.

13. Changes of the next leg of the Course

- 13.1 To change the next leg of the course, the race committee will lay a new mark (or move the finishing line) and remove the original mark as soon as practicable. When in a subsequent change, a new mark is replaced, it will be replaced by an original mark.
- 13.2 Minor mark moves (up to approximately 5 degrees and/or 10% in length) may be made by moving the existing mark, and without signalling the change. This changes RRS 33.

14. The Finish

- 14.1 The finishing line is between a staff displaying a blue flag on the finishing mark that is a race committee vessel and the course side of the finishing mark that is a buoy.
- 14.2 [DP] [NP] After finishing and clearing the finishing line, boats shall keep clear of the finishing area and of all boats not yet finished.
- 14.3 After the first boat has finished, the Race Committee may shorten the course. Boats that have already passed the shortened finishing line shall continue to the original finishing line if their future course does not re-pass the shortened finishing line. When a boat finishes in accordance with this rule she shall be given a finishing place after all boats which complete more legs of the course and then finish. This changes RRS 32.
- 14.4 The Race Committee may give a score to any boat that is still racing by displaying flag W to her from an official vessel (which may be in motion) with two sounds. A boat's score in these circumstances will be the place she would have received had she sailed the course and finished within any time limit, without gaining or losing any place. She is no longer required to complete the course. This changes RRS 28.1.

15. Penalty System

15.1 Post-Race Penalty

- a) A boat that may have broken a rule of Part 2 of the Racing Rules of Sailing or rule 31 may, after finishing the race concerned and before the protest time limit or, if a hearing has been scheduled, before the start of that hearing, notify the race committee that it accepts a Post-Race Penalty – a 30% scoring penalty (SCP), based on the number of boats that came to the starting area in that race, except that the minimum penalty is

three places and the boat shall not be scored worse than the number of boats that came to the starting area. However, if the boat caused injury or serious damage or, despite taking a penalty, gained a significant advantage in the race or series by its breach, its penalty shall be to retire.

- b) When a Post-Race Penalty is accepted:
 - i. Neither the boat nor a protest committee may then revoke or remove the penalty.
 - ii. the boat shall not be penalised further in a protest hearing when the protest committee decides that it was appropriate to the facts found and the applicable rules

16. Time Limits and Target Times

- 16.1 The Target Race Time, Mark 1 Time Limit, Race Time Limit (see RRS 35), and the Finishing Window are shown in the table below. Target Race Time does not apply for foil and experimental course types.

Class	Target Race Time	Mark 1 Time Limit	Race Time Limit	Finishing Window
iQFoil	15 minutes	10 minutes	25 minutes	10 minutes
Techno	25 minutes	20 minutes	45 minutes	15 minutes
Open	25 minutes	20 minutes	45 minutes	15 minutes
Raceboard	25 minutes	20 minutes	45 minutes	15 minutes
WingFoil Open WingFoil X-15	15 minutes	10 minutes	25 minutes	10 minutes

- 16.2 If no boat has passed the first mark within the Mark 1 Time Limit, the race will be abandoned.
- 16.3 The Finishing Window is the time for boats to finish after the first boat sails the course and finishes. Boats failing to finish within the Finishing Window, and who were not finished according to SI 14.3 or 14.4 and who were not subsequently retiring, penalized or given redress will be scored Time Limit Expired (TLE) without a hearing. A boat scored TLE shall be scored points for the finishing place two more than the points scored by the last boat that finished within the Finishing Window or according to SI 14.3 or 14.4, except that her score will not be worse than a DNS. This changes RRS 35, A5.1, A5.2 and A10.
- 16.4 Failure to meet the Target Time will not be grounds for redress. This changes RRS 62.1(a).

17. Hearing Requests

- 17.1 For each class, the protest time limit is 30 minutes after the last board in that class finishes the last race of the day or the race committee signals no more racing today, whichever is later.
- 17.2 Hearing requests forms are available from the race office.
- 17.3 Notices will be posted no later than 30 minutes after the protest time limit to inform competitors of hearing in which they are parties or named as witnesses. Hearings will be held in the protest room, located at SWSA Office, beginning at the time posted.
- 17.4 Advisory Hearing**
- a) When there is an incident that will not result in the lodging of a protest or a request for redress, a boat may request an advisory meeting and notify any boat involved in the incident.
 - b) An adviser will then call a meeting to learn what may have happened and will state whether any rule appears to have been broken, and by which boat.

- c) A boat may as a result notify the race office that it accepts a Post-Race Penalty when it applies to the incident, or choose to retire, but is not required to do so.

17.5 RYA Arbitration

- a) After a protest is lodged, a boat may request RYA Arbitration, or the protest committee or race committee may offer it.
- b) If the parties and the protest committee agree that RYA Arbitration is suitable, an arbitrator (who may be a member of the protest committee) will call an arbitration.

When it is the arbitrator's opinion that a boat that is a party to the arbitration has broken a rule for which the Post-Race Penalty is available, the party will be invited to accept that penalty and, if all such penalties are accepted, the protesting boat will be allowed to withdraw the protest, changing rule 63.1

- c) When any of the following conditions apply,
 - i. a party to the protest does not agree to RYA Arbitration,
 - ii. the arbitrator's opinion is that the Post-Race Penalty is not applicable to the incident
 - iii. a boat may be entitled to redress
 - iv. a boat does not accept an offered Post-Race penalty,
 - v. the protest is not withdrawn,

there will be a protest committee hearing.

The arbitrator may be a member of the protest committee.

Any boat is entitled to accept a Post-Race Penalty at any time before the later of the protest time limit or the start of the protest committee hearing and receive protection from further penalisation. The boat may also retire.

- d) Rules 66 and 70 (reopening and appeal, respectively) do not apply to an RYA Arbitration since this is not a protest committee decision or procedure.

18. Scoring

18.1 Rule A5.3 applies

18.2 Discards

- a) When fewer than 3 races have been completed, a boat's series score is the total of her race scores.
- b) When from 3 to 6 races have been completed, a boat's series score is the total of her race scores excluding her worst score.
- c) When from 7 to 10 races have been completed, a boat's series score is the total of her race scores excluding her two worst scores.
- d) When 11 or more races have been completed, a boat's series score is the total of her race scores excluding her three worst scores.

19. Safety Regulations [DP] [NP] [SP]

19.1 Check-Out and Check-In Procedures ("Tally System"). The requirements of this instruction are specified for the safety of competitors.

- a) The tally control point to check-out and check-in competitors will be located at the entrance to the Race Office
- b) Tallies comprise of numbered rubber wristbands. Numbers will be allocated at registration. Tallies shall be worn visibly, over clothing, on the right wrist at all times while afloat.
- c) Sailors shall individually check-out before racing by personally collecting their tally.

- d) Sailors shall individually check-in immediately on returning to shore after racing, but no later than the protest time limit, by returning the tally personally to tally control.
 - e) The penalty for failure to comply with this instruction will be 5 points added to the boat's series score for each infringement without a hearing. This changes rule A5.
- 19.2 For all competitors aged 17 and under on December 31st 2024, RRS 40 shall always apply while afloat.
- 19.3 Boats shall follow the instructions of Official Vessels. Infringements will be reported to the race committee, which may protest the boat. Boats are warned that the protest committee may decide that a breach of this instructions amounts to a breach of RRS 2.
- 19.4 When the race committee consider that a board, its equipment, or crew are not adequate for the exiting or anticipated conditions, or that a board or crew member is in difficulty, it may instruct the board or crew not to launch, or to retire or to sail ashore or to accept outside help. The board and crew shall comply with such instructions without delay.

20. Replacement of Crew or Equipment [DP] [NP]

- 20.1 Boats must inform the Race Office of any substitution of damaged or lost equipment. Replacement equipment shall comply with the class rules.

21. Equipment and Measurement Checks

- 21.1 A boat or equipment may be inspected at any time for compliance with the class rules and sailing instructions. On the water or ashore, a boat can be instructed by the Technical Committee to proceed immediately to a designated area for inspection.
- 21.2 [DP] [NP] A boat shall comply with any reasonable request made by the Technical Committee
- 21.3 [NP] A breach of a Class Rule shall not be grounds for protest by another boat. This changes RRS 60.
- 21.4 [NP] A boat within the Techno 5.0 or Techno 5.8 Class shall not use sails with more than 6 battens or more than 2 cams.
- 21.5 The fact that race officials may conduct inspections of a boat does not reduce the responsibilities of each competitor set out in the Rules.

22. <Intentionally Blank>

23. Official Vessels

- 23.1 Official Vessels will be identified by

24. Support Teams [DP] [NP]

- 24.1 Team leaders, coaches and other support persons shall stay outside areas where boards are racing from the time of the preparatory signal for the first class to start until all boards have finished or retired or the race committee signals a postponement, general recall or abandonment.
- 24.2 For the avoidance of doubt, instruction 24.1 does not change RRS 1.1 and support boats shall give all possible help to any person or vessel in danger.

25. Trash Disposal [SP] [DP] [NP]

- 25.1 As sailors, we seek to protect and restore our oceans and coastal waters. Trash may be placed aboard safety and race committee vessels. Boats shall not put litter in the water.

26. <Intentionally Blank>

27. <Intentionally Blank>

28. <Intentionally Blank>

29. Prizes

- 29.1 A list of prizes to be awarded may be posted on the Official Notice Board after registration is completed

30. Risk Statement

- 30.1 Rule 3 of the Racing Rules of Sailing states: 'The responsibility for a boat's decision to participate in a race or to continue racing is hers alone.'
Sailing is by its nature an unpredictable sport and therefore inherently involves an element of risk. By taking part in the event, each competitor agrees and acknowledges that:
- a) They are aware of the inherent element of risk involved in the sport and accept responsibility for the exposure of themselves, their crew and their boat to such inherent risk whilst taking part in the event;
 - b) They are responsible for the safety of themselves, their crew, their boat and their other property whether afloat or ashore;
 - c) They accept responsibility for any injury, damage or loss to the extent caused by their own actions or omissions;
 - d) Their boat is in good order, equipped to sail in the event and they are fit to participate;
 - e) The provision of a race management team, patrol boats and other officials and volunteers by the event organizer does not relieve them of their own responsibilities;
 - f) The provision of a race management team, patrol boats and other officials and volunteers by the event organizer does not relieve them of their own responsibilities;
 - g) It is their responsibility to familiarise themselves with any risks specific to this venue or this event drawn to their attention in any rules and information produced for the venue or event and to attend any safety briefing held for the event;

31. Data Protection

- 31.1 The personal information you provide to the organizing authority will be used to facilitate your participation in the event. If you have agreed to be bound by the Racing Rules of Sailing and the other rules that govern the event (the rules), the legal basis for processing that personal information is contract. If you are not bound by the rules, the legal basis for processing that personal information is legitimate interest. Your personal information will be stored and used in accordance with the organizing authority's privacy policy. When required by the rules, personal information may be shared with the RYA, your national authority and/or World Sailing. The results of the event and the outcome of any hearing or appeal may be published.

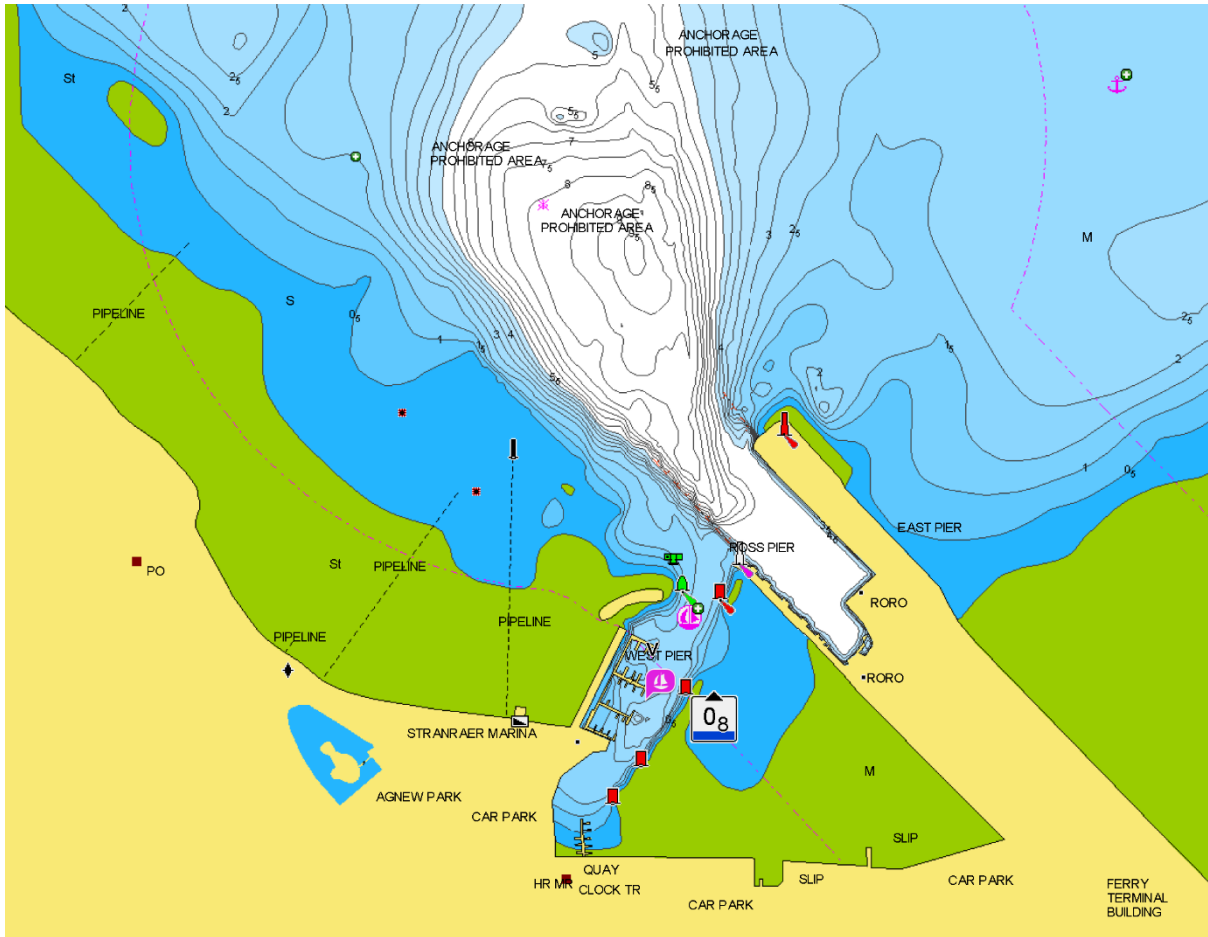
32. Insurance [DP] [NP]

- 32.1 Each participating boat shall be insured with valid third-party liability insurance with a minimum cover of £5,000,000 (five million) per event or the equivalent.

Addendum A – Sailing Areas

Sailing will take place in Loch Ryan

Launch Area



Racing Area

